

Net2 RS485/232 Converter

Contents of kit

Net2 RS485/232 communications converter PCB
9-pin to 9-pin 3m-serial cable (Only with converter kit)
12V dc switch mode power supply (Only with converter kit)
Mains power lead (Only with converter kit)
Plastic wall mounting housing with lid (Only with converter kit)
Fitting Kit (Only with converter kit)

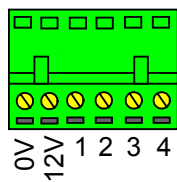
Installing the dataline

What data cable should be used?

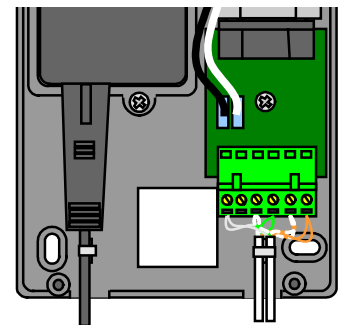
The hardware has been improved to accommodate using Category 5 (CAT5) cable for networking the Net2 controllers. The network labelling has been changed to reflect this. It is still OK to use Beldon 8723 cable.

IMPORTANT NOTE: When connecting up the data cable, connect up the 1's to the 1's, the 2's to the 2's

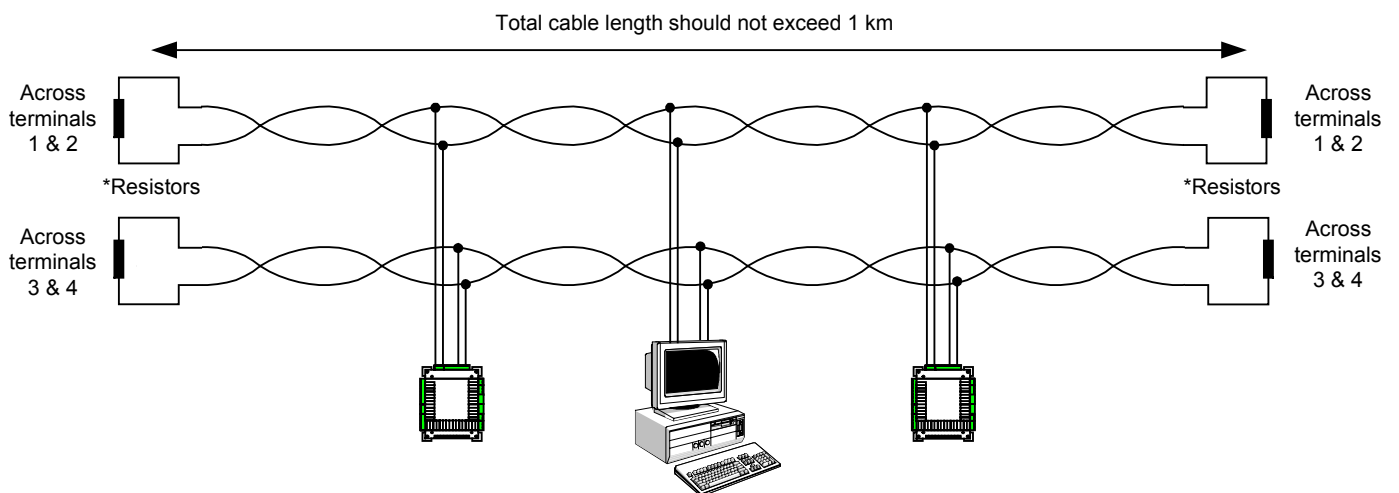
The PC with the RS485/232 interface can be positioned at the most convenient point along the network. The wiring is the same as at the ACUs.



Cable core	ACU	RS485/232	Old network labelling
White/Green	1	1	OUT-B
Green	2	2	OUT-A
White/Orange	3	3	IN-A
Orange	4	4	IN-B

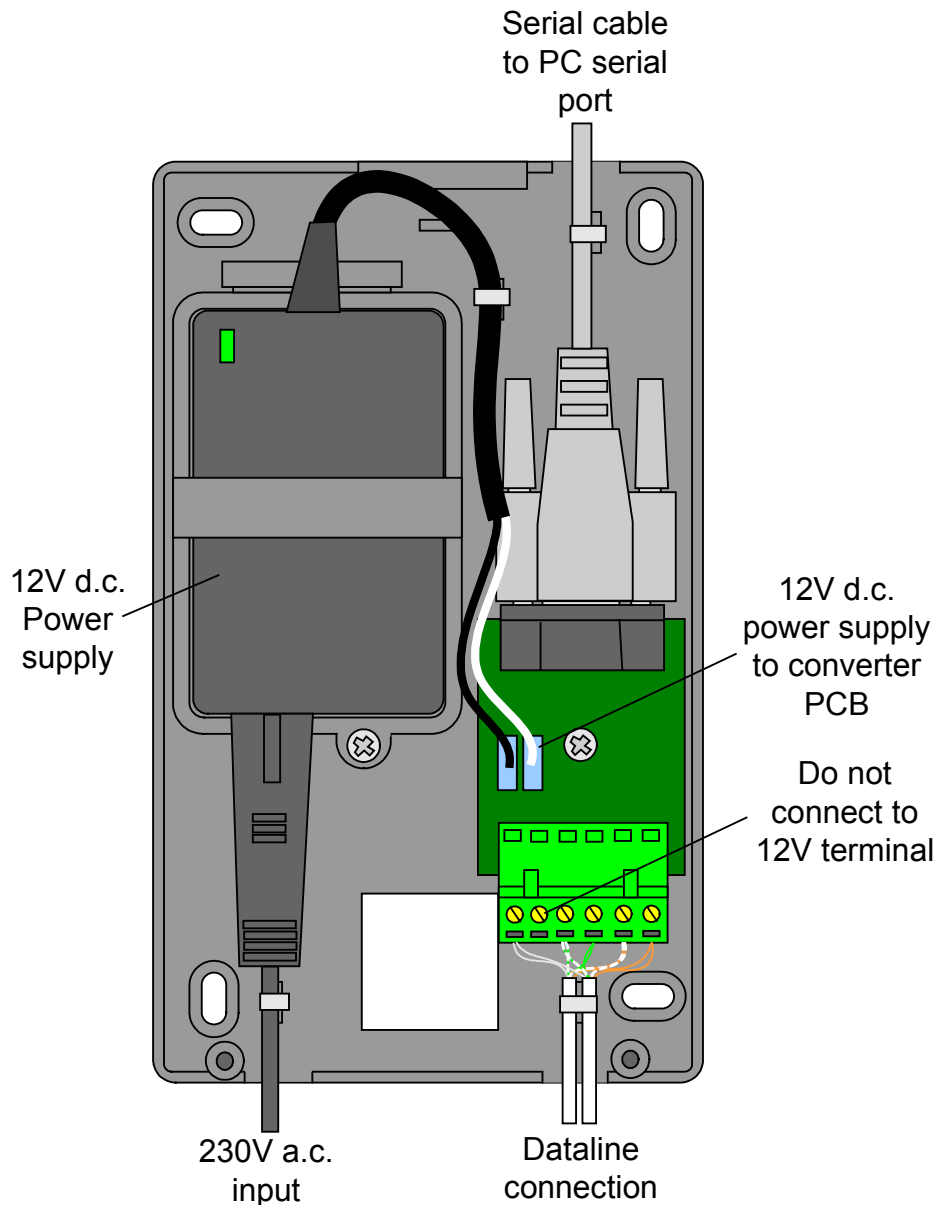


NOTE: The cable screen should be connected into the 0V terminal. If non-screened CAT5 cable is used, then any unused cores should be wired into the 0V terminal.



*120 Ohm termination resistors are required across each of the twisted pairs at either end of the data line.

Installing the Converter



IMPORTANT: 12V dc should not be connected to the 12V input on the screw terminal block, this should only be used as a 12V output, total load, including the converter PCB, should not exceed 1A.

Technical help line

Feel free to contact the Technical help line Mon-Fri from 08:30 to 17:30 on 01273 480291. You can contact us by e-mail – support@paxton-access.co.uk. Our web site address is www.paxton-access.co.uk.