



# VISTA SMARTDISC AUDIO MODULE



## IDEAL FOR APPLICATIONS SUCH AS:

- Quarries
- Railway crossing points
- Multi-story car parks
- Garages
- Banks & building societies
- Hotels
- Retail groups
- Covert surveillance operations (listening)
- All sites where alarm verification is required
- Viewing site cameras on the company network for health and safety as well as a management tool

## MAIN FEATURES:

- Allows two-way speech when used with Vista SmartDisc
- Allows one-way audio (listening) when used with Vista SmartTel
- TrueSpeech for exceptional speech quality

## SMART SECURITY WITH AUDIO

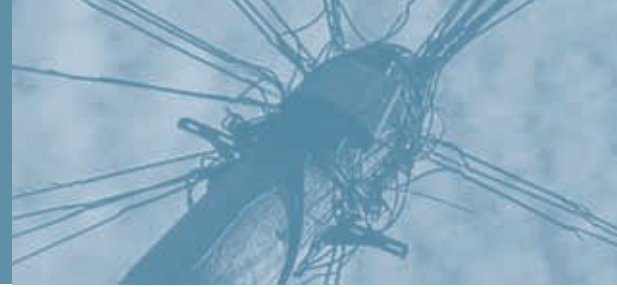
The Vista SmartDisc Audio Module brings audio transmission to the SmartTel range of transmission products.

Allowing real time, TrueSpeech quality audio transmission, the module offers two-way speech when connected to a Vista SmartDisc digital video recorder (VLS-DRe, VLS-DRTA or VLS-DRLAN), or one-way audio (listening) when connected to a SmartTel transmission unit (VLS-TR or VLS-TRTA).

The Vista SmartDisc Audio Module is a simple expansion to your Vista Smart system that gives the ability to communicate fully with a remote site for applications such as a gate or barrier operation, where two-way conversation is required, or alternatively a central station can issue a warning message to an unmanned site experiencing undesired activity.



THE UK'S PREMIER CCTV BRAND



## TECHNICAL SPECIFICATIONS

<b>VLD-DRAM</b>	
SYSTEM INTEGRATION	RS-232 interface or direct connection of Audio Module to SmartDisc or SmartTel, 9-pin sub-D plug. Data interface cable included
LINE-IN/OUT	0-2V (nominal $\pm$ 0.775V)
MICROPHONE IN	Electret/capacitor mic; 3.5mm jack
SPEAKER OUT	1 Watt/8-Ohm; connection via terminal screws
RELAY	1 x changeover contact relay (e.g for audio transmission indication light)
FREQUENCY RANGE	80 - 4000 Hz
SUPPLY VOLTAGE	Nominal 12V DC
POWER SUPPLY	External switch power supply unit with 100-240V AC / 12V DC at max. 0.85A. Note: the power supply unit is included
TRUESPEECH CODEC	The TrueSpeech codec must be installed on the receiver PC from the Windows® CD or after downloading from Microsoft® or the DSP Group
HOUSING DIMENSIONS	Suitable for desk top or wall mounting, 150 x 60 x 100 (W x H x Dmm)
BOX DIMENSIONS	336 x 232 x 118 (W x H x Dmm)
WEIGHT	600g
GROSS WEIGHT	2Kg
<b>COMPATIBILITY:</b>	
VLS-DRE/TA/LAN	Duplex / two-way communications
VLS-TR/TRTA	Simplex / one-way communication (from transmitter)
VLS-TRL	Not compatible
VLS-DCM	Cannot be used in conjunction with Audio Module

## ORDERING INFORMATION

VLS-DRAM	AUDIO MODULE FOR USE WITH VISTA SMARTDISC AND VISTA SMARTTEL
VLS-DRE/TA/LAN	4 CHANNEL SMARTDISC
VLS-TR/TRTA	10 CHANNEL SMARTTEL
VLS-TRL	2 CHANNEL SMARTTEL
VLS-DCM	SMARTDOME MODULE

DISTRIBUTED BY:

ALL SPECIFICATIONS ARE SUBJECT TO CHANGE WITHOUT NOTICE



**VISTA** NORBAIN HOUSE, ESKDALE ROAD, WINNERSH TRIANGLE, WOKINGHAM, BERKSHIRE. RG41 5TS  
 TELEPHONE: +44 (0) 118 944 0123 FAX: +44 (0) 118 944 0999  
 WEBSITE: WWW.VISTA-CCTV.COM