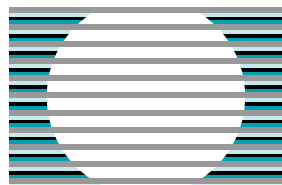


radio
based
data
communication

**Product
Guide**



RDT

Data *transmission*

Video *transmission*

Radio *telemetry*

OEM components

and design services



Radio Data Technology's leadership position is built on the Company's considerable pedigree in data and radio communications technology. RDT have been designing and manufacturing radio based data products since the late 1980s. During that time we have built a reputation for technical innovation enhanced by products that are easy to use and cost effective. The company's continued investment in research and design ensures that RDT remains the supplier of choice for many of the world's leading companies.

Our products remove the problems and costs associated with using traditional cables or telephone lines when trying to communicate between two or more pieces of equipment. RDT's products have been used in a diverse range of applications, ranging from improving safety in quarries to countywide control systems for water supply and cable free video transmission from bomb disposal robots.

Should you require any further help or information on our product range, or have any questions that you would like answered, then please contact one of our sales engineers – we are more than happy to assist!



RADIO DATA TECHNOLOGY

10 - 11 Taber Place, Crittall Rd, Witham, Essex, CM8 3YP, UK

Tel: +44 (0)1376 501255

Fax: +44 (0)1376 501312

Email: sales@radiodata.co.uk

www.radiodata.co.uk

A member of the CML Microsystems Plc Group

Data *transmission*

Radio Modems

Products which allow the wireless interconnection of user equipment containing RS232 or RS485 serial data interface. All RDT modem products provide a transparent link between two or more pieces of user equipment. LED indicators are provided for monitoring radio functions, signal strength and serial line status.



RM96xx Series

- RS232/RS485 interface
- 16kbps over-air rate
- 500mW transceiver (1 W option)
- 406-470 MHz
- FEC, ARQ and repeater modes
- Selectable Hayes and serial control modes
- Commissioning and diagnostic features
- Various housings available
- International approvals
- Optional digital I/O



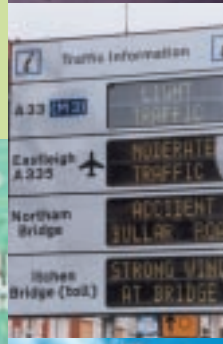
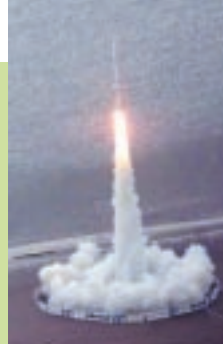
RM400

- MPT 1411 approved
- RS232/RS485 data interface
- Balanced audio interface with 3 filter characteristics
- FEC, ARQ and repeater modes
- Commissioning and diagnostic features
- UHF synthesised transceiver



APPLICATIONS

Telemetry, data acquisition, access control, alarm systems, remote metering, remote control systems, warehousing and dispatch, SCADA, security systems, video surveillance systems, PTZ camera control, traffic information, control systems etc.



Radio *telemetry*

VersaNet2

Wireless telemetry and remote alarm & control system. Allows the wireless inter-connection of two or more pieces of equipment needing to exchange data in one of the standard process control data formats such as 0-5v, 0-20mA, volt-free contact, relay output, pulse counting or RS232 MODBUS format.

Features

- Multi-channel synthesised radio
- Intelligent secure network operation
- Low power operation (including repeater)
- Powerful Windows based configuration
- SCADA interface
- International approvals

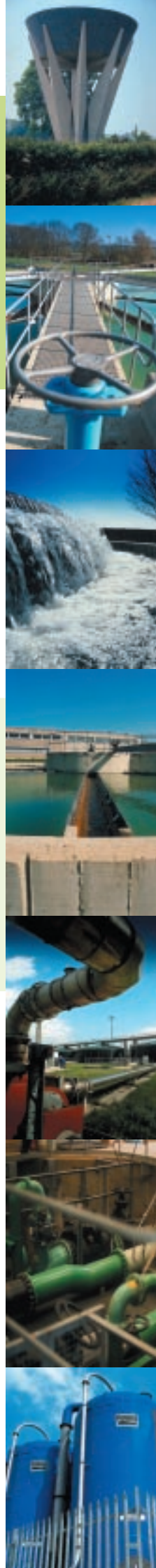
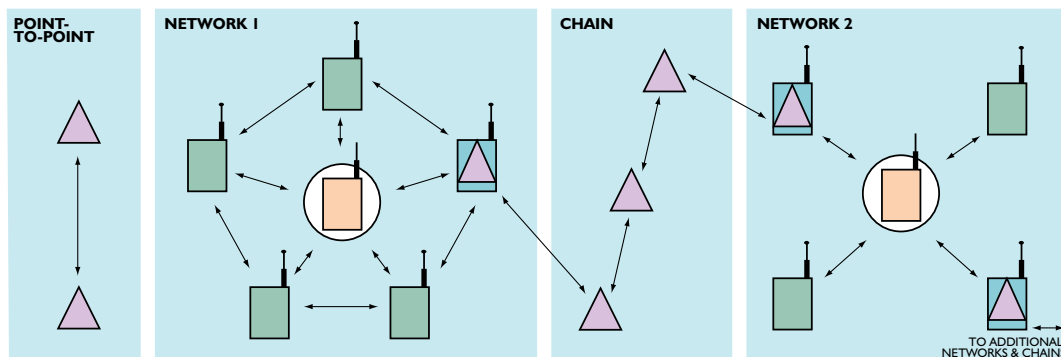


Range of modules

- Communications controller
- Digital & pulse I/O
- Analogue I/O
- Combined digital and analogue
- Low power

APPLICATIONS

Remote monitoring & control, energy management systems, alarm & security, agricultural monitoring, water & waste treatment, SCADA, gas & oil, traffic & transport, production control systems.



Video *transmission*

Videowave

Real time wireless transmission of video. Approved to MPT1349 and ETS 300 440.



VTX2400 & VRX2400

- 12V operation
- Lightweight robust design
- Power/Transmit LED
- Signal strength indicator
- 10, 25, 100 and 500 mW output power
- ETS 300 440 approved



VTX1394CE & VRX1394CE

- 12V operation
- Lightweight robust design
- Power/Transmit LED
- Signal strength indicator
- 500mW output power
- MPT1349 approved

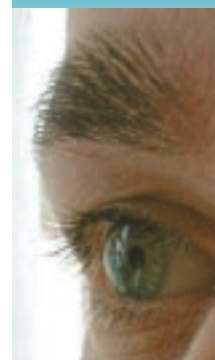
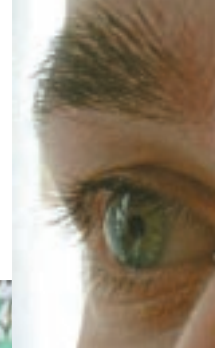


KIT 1394CE

- VTX 1394 transmitter
- VEW 1394 portable receiver
- Re-chargeable battery
- Lockable flight case
- Receiver with built-in 2.9 " LCD display
- 12V operation
- Lightweight and portable

APPLICATIONS

CCTV point to point, air to ground link, mobile surveillance, remote site monitoring, covert.



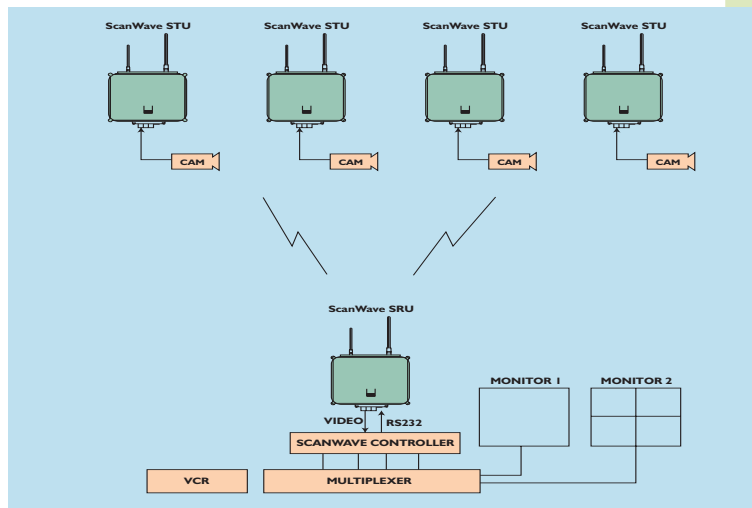
Multiple Video *transmission*

ScanWave

Real-time wireless transmission of video signals from multiple cameras. Approved to MPT1349 and MPT1329 the ScanWave system utilises time-division techniques to share a single RF channel with a number of wireless video transmitters. When used in conjunction with a video multiplexer it is possible to view all cameras simultaneously.



- Colour transmission
- Modular design permits expansion
- Monitor/switcher output
- Priority camera select
- Real-time mode
- 200mS scan rate
- Adjustable dwell time in switchmode
- Tri-colour LED selector buttons
- RS232 data port for compatible telemetry



Video and Radio Telemetry Application

